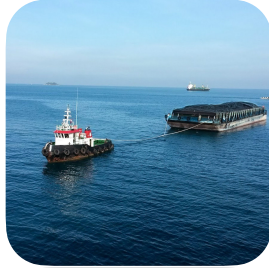


Is a company specialized in river-sea transport and chartering in the Gulf of Guinea.
 Made up of a team of professionals at your service.
 We offer you an adapted and tailor-made solution for each kind of operation.

Services:

- Maritime Transport in the gulf of Guinea
- Chartering : Tugs and barges
- Towing and assistance
- Transhipment

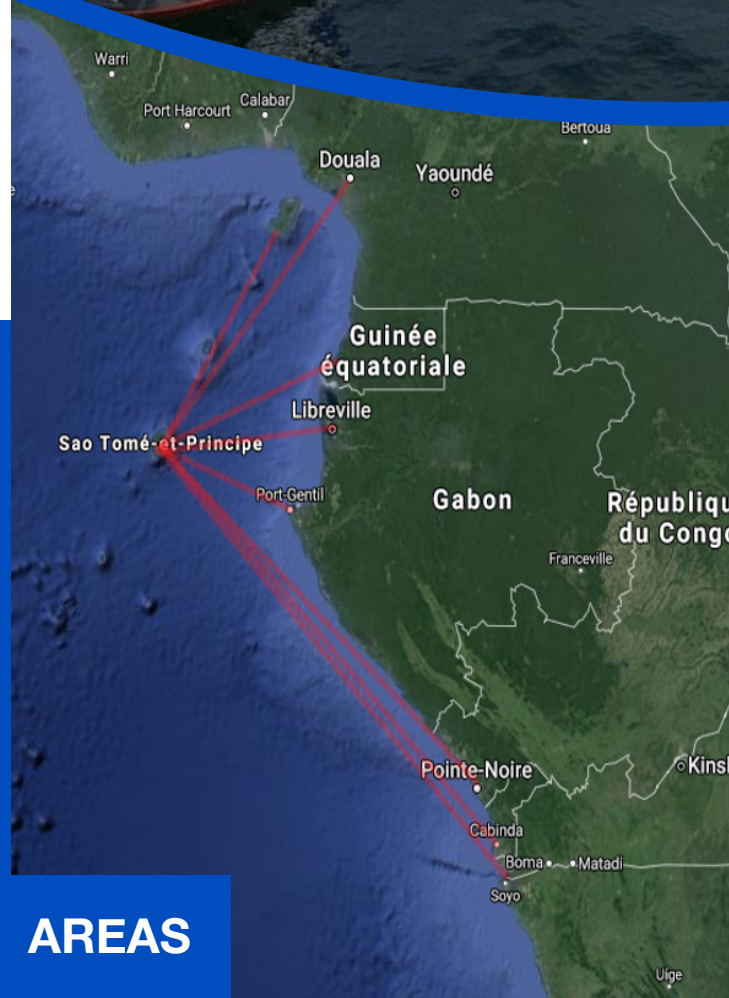


Customers and partners:

Support manufacturers and actors involved in projects such as:

- Construction and buildings: transport of materials on site
- Exploitation of raw materials: Assistance to oil , forestry and mining operations
- Planting: Transport of fruits and vegetables
- Processing industries
- Importers and exporters in the sub-region CEMAC

In order to meet constraints of location, we offer solutions for each project, through logistical feasibility, studies and plans.



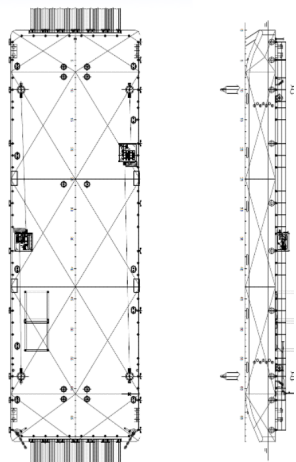
AREAS

CONTACT

 MAC GREGOR MARINE SERVICE - RUA MORTA - Ao lado do BISTP
 SAO TOME - SAO TOME E PRINCIPE

 Tel : +239 991 75 86 / +33 749 44 96 19

 Email : info@macgregor-ms.com



GENERAL

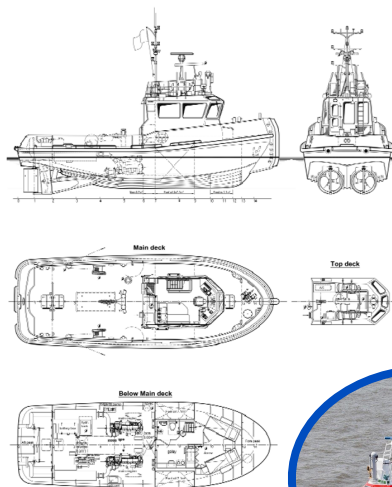
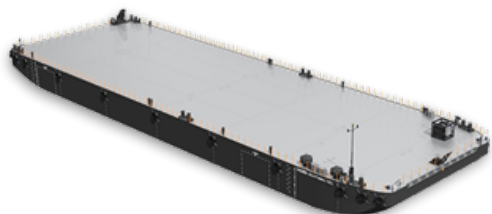
Typical applications: Deck Cargo, RoRo Cargo
 Typical area of operation: Deep Sea, Coastal waters, Harbours, Inland water
 Classification Lloyd's Register ✱100 AT, Pontoon, Strengthened for deck load of 10 ton/m², Bottom Strengthened for Loading and Unloading Aground, ✱IWS
 Flag St. Vincent and the Grenadines

DIMENSIONS

Length moulded 41.40 m
 Beam moulded 13.00 m
 Depth moulded 3,00 m
 Draught max. 2,37 m
 Free deck space 530 m²
 Deadweight max. 965 ton

CAPACITIES

Deck load 10 ton/m²
 Deck thickness 12 mm extra heavy deck
 Void spaces 10 pcs., 1.500 m³
 Ramp panels 1,5 meter width and 8 meter length
 Railing Removable stanchions with wire guard rails



Basic functions Towing and mooring, pushing and survey operations
 Classification Bureau Veritas
 I [?] [?] HULL • MACH Tug Coastal area incl.tonnage certificate
 Painting: Epoxy paint system

DIMENSIONS

Length overall 16.76 m
 Beam overall 5.94 m Depth at sides 2.54 m
 Draught aft (approx.) 2.25 m
 Displacement:90 t
 Scantlings Sides and bottom 10 mm, Sheerstrake 20 mm

TANK CAPACITIES

Fuel oil 14.2 m³
 Fresh water 1.1 m³
 Sewage 0.7 m³
 Bilge water 0.5 m³

PERFORMANCES

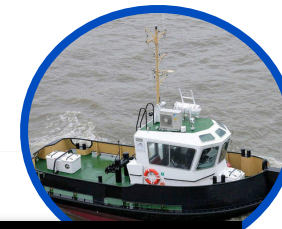
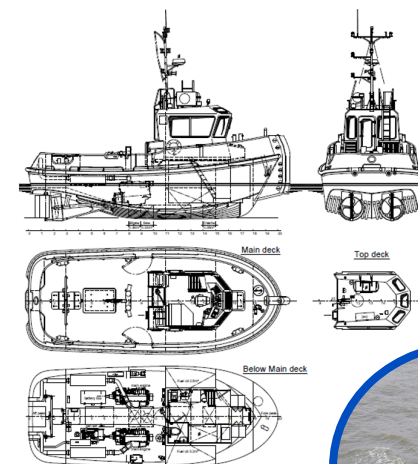
Bollard pull ahead 16 t Speed 11.0 kn

PROPULSION SYSTEM

Main engines 2xCaterpillar C18 TA/A / Total power 894 bkW (1216 bhp) at 1800 rpm
 Gearboxes 2x Reintjes WAF 264L 4.5:1
 Propellers 2x Kaplan II Fixed pitch
 Nozzles 2x 1350 mm Van de Giessen 'Optima' with stainless steel innerrings
 Rudders 2x streamlined double plate
 Steering gear Powered-hydraulic 2x 50° + rudder indicator

NAUTICAL AND COMMUNICATION EQUIPMENT

Searchlight Pesch 250W
 Horn: Electric Ebuki E90
 Ø Radar Furuno FR-8065
 Compass Cassens & Plath type Kotter
 GPS Furuno GP-32
 Echosounder Furuno LS-6100
 VHF radio telephone Sailor Compact 6248, 25 W
 Navigation lights Navigation lights incl. towing and side lights Floodlight 150 W on aft deck



Basic functions Towing and mooring operations
 Classification Bureau Veritas
 I ✱ HULL • MACH Seagoing Launch / Painting Epoxy paint system

DIMENSIONS

Length overall 13.08 m
 Beam overall 5.28 m
 Depth at sides 2.30 m
 Draught aft (approx.) 1.80 m
 Displacement (98% consumables)58 t
 Scantlings Sides and bottom 10 mm, Sheerstrake 15 mm

TANK CAPACITIES

Fuel oil 5.80 m³
 Fresh water 0.35 m³
 Sewage 0.33 m³ B
 ilge water 0.30 m³

PERFORMANCES

Bollard pull 8.3 t
 Speed 8.8 kn

PROPULSION SYSTEM

Main engines 2x Volvo D9 MH / Total power 442 bkW (600 bhp) at 1800 rpm
 Gearboxes Twin Disc MG 5091 / 3.82:1
 Propellers 2x Kaplan fixed pitch, 1050 mm diameter
 Nozzles 2x Van de Giessen 'Optima' with stainless steel innerrings
 Engine control Volvo EVC
 Rudders 2x double plate high performance
 Steering gear Powered-hydraulic 2x 50° + rudder indicator

NAUTICAL AND COMMUNICATION EQUIPMENT

Searchlight Den Haan 250 W, 24 V
 Ø Radar Furuno FR-1835
 Compass fluxgate Cassens & Plath
 GPS Furuno GP-32
 Echosounder Furuno LS-6100
 VHF radio telephone Sailor Compact 6248, 25 W
 Navigation lights Navigation lights incl. towing and side lights Floodlight 150 W on aft deck